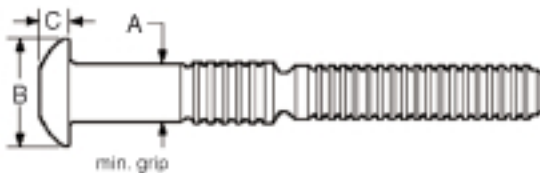
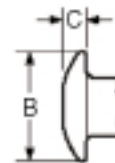


HUCK® PARTS FOR TRAILERS

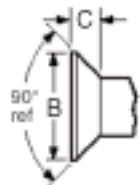
Brazier Head—C6LB



Truss Head—C6LT



Flush Head—C6L90



Diameter	Brazier Head (B)			Truss Head (T)		Flush Head (90)	
	A	B	C	B	C	B	C
6 (3/16)	.195-.191	.394-.356	.125-.113	.496-.406	.088-.078	.354-.328	.085-.075
8 (1/4)	.259-.254	.525-.475	.152-.136	.594-.531	.115-.103	.473-.437	.115-.103
10 (5/16)	.322-.317	.656-.594	.201-.181	.797-.703	.141-.127	.589-.547	.141-.127
12 (3/8)	.385-.380	.787-.713	.248-.223	.922-.828	.168-.152	.709-.656	.168-.152

Collars

2LC



3LC



8LC



Pin Material

Carbon Steel (R)
2024 Aluminum Alloy (C)
6061 Aluminum Alloy (F)
Stainless Steel (U)

Collar Type:	Standard	Flange	Low Profile	Wide Flange
Part Number:	2LC-R 2LC-F	3LC-2R 3LC-F	8LC-2R 8LC-F	3LCW-2R6 3LCW-2R8
Collar Diameter:	6 (3/16) 8 (1/4) 10 (5/16) 12 (3/8)	6 (3/16) 8 (1/4) 10 (5/16) 12 (3/8)	6 (3/16) 8 (1/4) 10 (5/16) 12 (3/8)	6 (3/16) 8 (1/4) 10 (5/16) 12 (3/8)

Collar Material

Low Carbon Steel (R) or
(2R) 5062 Aluminum Alloy
—Heat treated (F)
6061 Aluminum Alloy (I)
Stainless Steel (CU)

Pin Finish

Carbon Steel—None (Plain Black)
2024 Aluminum Alloy—Anodize Per MIL-A-8625 or chemical surface treatment per MIL-C-5541 (Manufacturer's option)
6061 Aluminum Alloy—None
Stainless Steel—None

Collar Finish

Carbon Steel—Zinc Plated, Wax Film Lubricated
Aluminum Alloy—None, Wax Film Lubricated
Stainless Steel—None, Wax Film Lubricated
Wax Film Lubricated