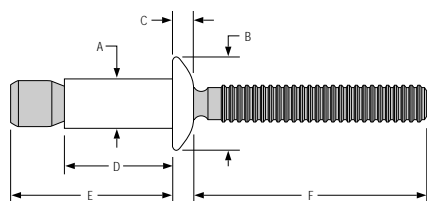
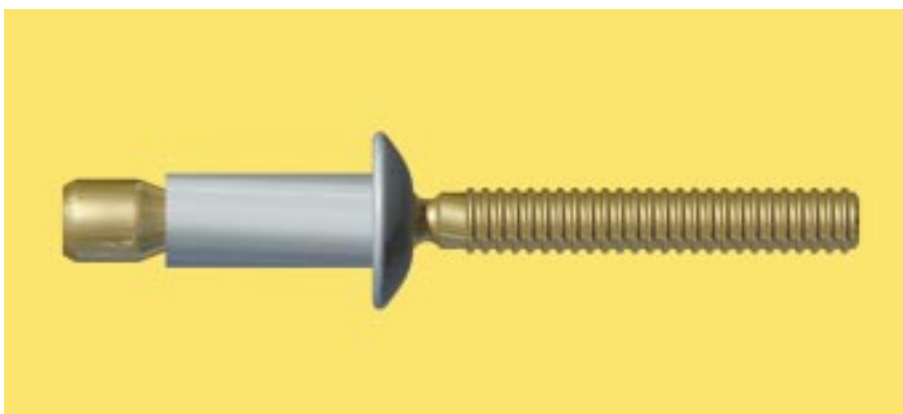
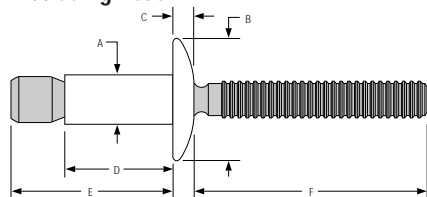


Magna-Lok[®] LockRite[™]

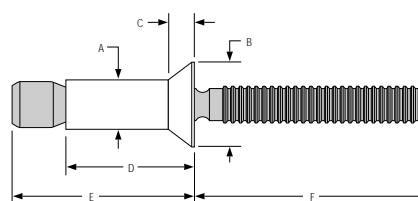
Strong, consistent and reliable. Employing a unique solid-circle lock, the Magna-Lok[®] fastener creates an internal lock during installation that virtually eliminates pin pushout.



Protruding Head



Truss Head



100° Countersunk Head

Dimensional Data—Protruding Head

Dia. (No.)	Steel	Aluminum	Stainless	Grip Range	Hole Size	A	B	C	D	E	F
3/16 (6)	MGLP-R6-4*	MGLP-B6-4*	MGLP-U6-4	.062 - .270	.191 - .201	.188	.385	.085	.415	.675	1.00
	MGLP-R6-7*	MGLP-B6-7*	MGLP-U6-7	.214 - .437	.191 - .201	.188	.385	.085	.572	.825	1.00
	MGLP-R6-E*	MGLP-B6-E*		.062 - .437	.191 - .201	.188	.385	.085	.572	.950	1.00
1/4 (8)	MGLP-R8-6*	MGLP-B8-6*	MGLP-U8-6	.080 - .375	.261 - .272	.253	.525	.117	.560	.970	1.00
	MGLP-R8-10*	MGLP-B8-10*	MGLP-U8-10	.350 - .625	.261 - .272	.253	.525	.117	.810	1.220	1.00
	MGLP-R8-E*	MGLP-B8-E*		.080 - .625	.261 - .272	.253	.525	.117	.810	1.405	1.00
3/8 (12)	MGLP-R12-12	MGLP-B12-12		.120 - .560	.392 - .408	.386	.787	.175	.840	1.650	1.545

Dimensional Data—Truss Head

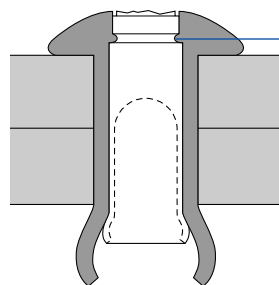
Dia. (No.)	Steel	Aluminum	Stainless	Grip Range	Hole Size	A	B	C	D	E	F
3/16 (6)	MGLT-R6-4	MGLT-B6-4		.062 - .270	.191 - .201	.187	.500	.085	.415	.675	1.00
	MGLT-R6-7	MGLT-B6-7		.214 - .437	.191 - .201	.187	.500	.085	.572	.825	1.00
	MGLT-R6-E	MGLT-B6-E		.062 - .437	.191 - .201	.187	.500	.085	.572	.950	1.00
1/4 (8)	MGLT-R8-6	MGLT-B8-6		.080 - .375	.261 - .272	.253	.588	.117	.560	.970	1.00
	MGLT-R8-10	MGLT-B8-10		.350 - .625	.261 - .272	.253	.588	.117	.810	1.220	1.00
	MGLT-R8-E	MGLT-B8-E		.080 - .625	.261 - .272	.253	.588	.117	.810	1.405	1.00

Dimensional Data—100° Countersunk Head

Dia. (No.)	Steel	Aluminum	Stainless	Grip Range	Hole Size	A	B	C	D	E	F
3/16 (6)	MGL100-R6-6	MGL100-B6-6	MGL100-U6-6	.125 - .331	.191 - .201	.188	.345	.070	.486	.762	1.00
	MGL100-R6-9	MGL100-B6-9	MGL100-U6-9	.305 - .500	.191 - .201	.188	.345	.070	.653	.929	1.00
	MGL100-R6-E	MGL100-B6-E		.125 - .500	.191 - .201	.188	.345	.070	.653	.929	1.00
1/4 (8)	MGL100-R8-8	MGL100-B8-8	MGL100-U8-8	.160 - .475	.261 - .272	.257	.405	.079	.660	1.059	1.00
	MGL100-R8-12	MGL100-B8-12	MGL100-U8-12	.415 - .725	.261 - .272	.257	.405	.079	.910	1.309	1.00
	MGL100-R8-E	MGL100-B8-E		.160 - .725	.261 - .272	.257	.405	.079	.910	1.309	1.00

Typical Installed Values in Nominal Grip (lbs.)

		Aluminum	Steel	Stainless Steel
		3/16	Shear	600
	Tensile	500	1200	950
	Pin Retention	50	150	100
1/4	Shear	1300	2500	2350
	Tensile	890	2200	1800
	Pin Retention	100	300	200
3/8	Shear	2950	5600	NA
	Tensile	1900	4000	NA
	Pin Retention	250	650	NA



Unique solid-circle lock ensures maximum strength and resistance to vibration. It is designed to eliminate pin pushout. It forms a mechanical lock, permanently locking the pin and sleeve together.

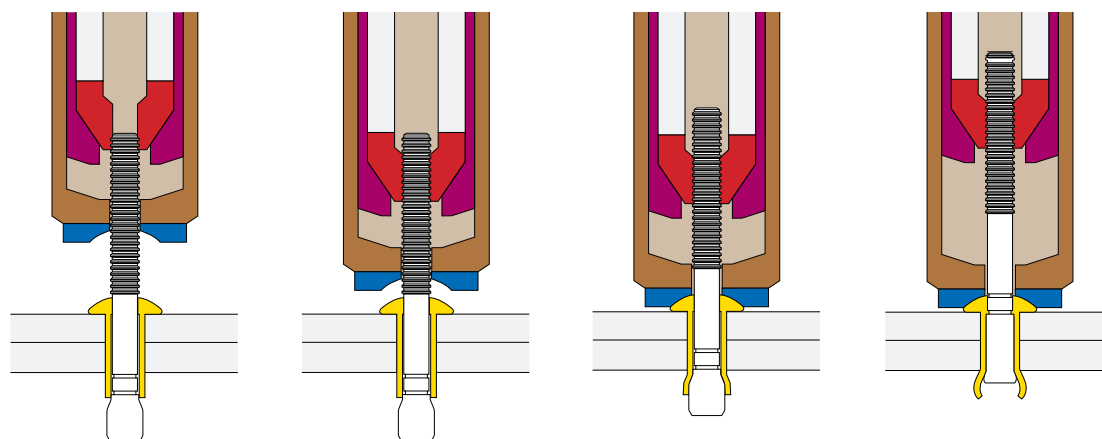
Material and Finish

Material	Sleeve	Pin	Sleeve Finish	Pin Finish
Steel	Low Carbon Steel	Medium Carbon Steel	Zinc Plated Clear Chromate	Zinc Plated Gold Chromate
Aluminum	5056	7075	Clear Chromate	Gold Chromate
Stainless	302	305/304	Passivated	Dry Lubricated

Installation Tooling

Dia.	Installation Tool	Nose Assembly		Type	Use	
3/16	229	99-3300	99-3316-68	Pneudraulic	Maintenance	
	230	99-3300	99-3316-68	Pneudraulic	Maintenance & Repair	
	2025	99-3300		Pneudraulic	Maintenance & Repair	
	202	99-3303	99-3316-68	Pneudraulic	Prod. or Maint. & Repair	
	2015	125154 (Insert, included with tool)		Pneudraulic	Prod. or Maint. & Repair	
	212	99-3300	99-3303	99-3316-68	Pneudraulic	Production
	AK180-I	120982		Pneudraulic	Maintenance & Repair	
	2480	99-3300	99-3303	99-3316-68	Hydraulic	Production
1/4	229	99-3301	99-3316-68	Pneudraulic	Maintenance	
	230	99-3301	99-3316-68	Pneudraulic	Maintenance & Repair	
	2025	99-3301		Pneudraulic	Maintenance & Repair	
	202	99-3301	99-3316-68	Pneudraulic	Prod. or Maint. & Repair	
	212	99-3301	99-3305	99-3316-68	Pneudraulic	Production
	AK180-I	202142		Pneudraulic	Maintenance & Repair	
	2480	99-3301	99-3305	99-3316-68	Hydraulic	Production
	246	99-3318		Pneudraulic	Production	
3/8	2580	99-3318		Hydraulic	Production	

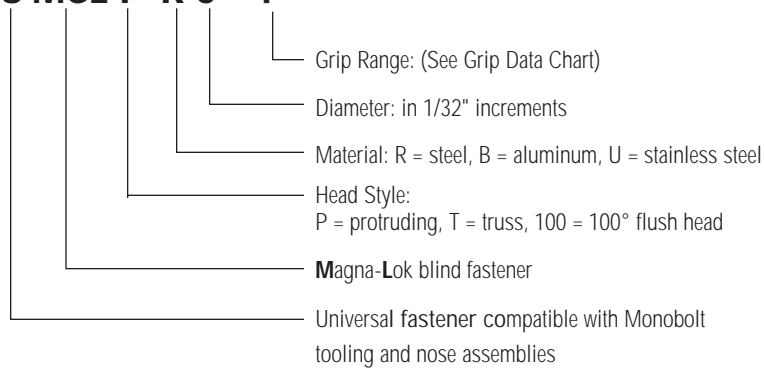
Installation Sequence



[Click Here to view animation of installation sequence](#)

Part Number Identification

U MGL P-R 6 - 4



NOTE: Contact your HUCK representative for head styles, grips, and configurations not shown.